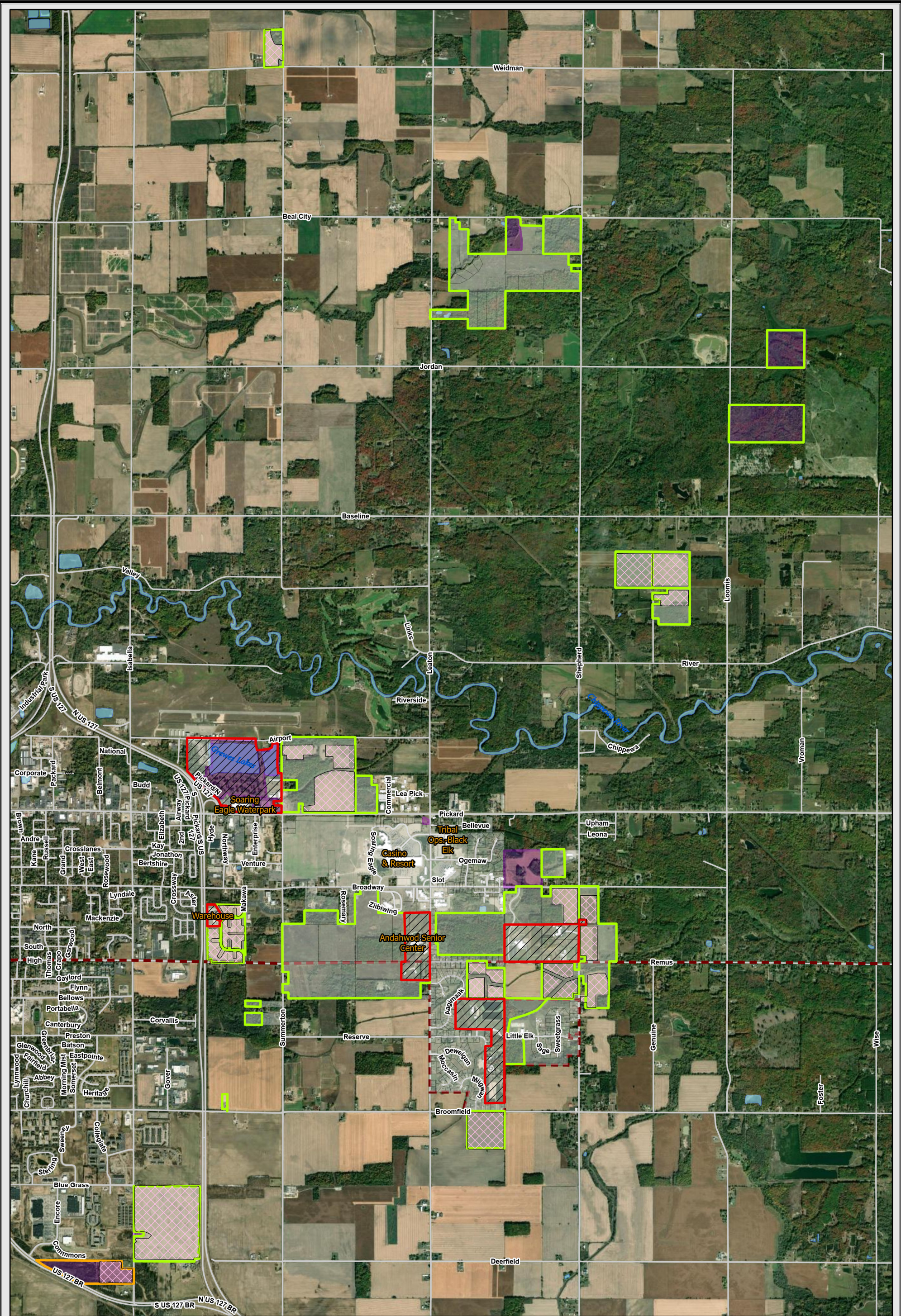


EXHIBIT B – Isabella County Open Lands Bow Season



Deer Season 2025 (Sept 4th- Oct 31st)
SCIT Members Hunting Areas

Zone

No Hunting

Bow

MI Permit

Land In Trust

Non Trust


Reservation

Farm Leased

(*Permission required until harvest)

N

The Saginaw Chippewa Indian Tribe makes no warranty expressed or implied, regarding the accuracy, completeness or usefulness of the information presented. Users of this information assume all liability of its fitness for a particular use.



Source: SCIT_Data 2025